



# Identity and Access Management



# INTRODUCTION

MCT IAM is a tool that provides authentication and authorization services for applications and services. It is designed to help developers easily implement security features in their applications without having to write complex code. MCT IAM provides Single Sign-On (SSO), Social Login, User Federation, Two-Factor Authentication, Multi-Factor Authentication, Authorization and Permission, and other security features that help protect applications and user data.

MCT IAM is built on top of open standards like SAML 2.0, OAuth 2.0 and OpenID Connect, making it easy to integrate with various application platforms, frameworks. It can be used for a variety of applications, from web and mobile apps to IoT devices and microservices. With MCT IAM, developers can focus on building applications while delegating security to a centralized identity provider.

MCT IAM is highly scalable and can be deployed on-premises or in the cloud. It also provides an administration console that allows administrators to manage users, roles, and permissions for their applications.



# FEATURES

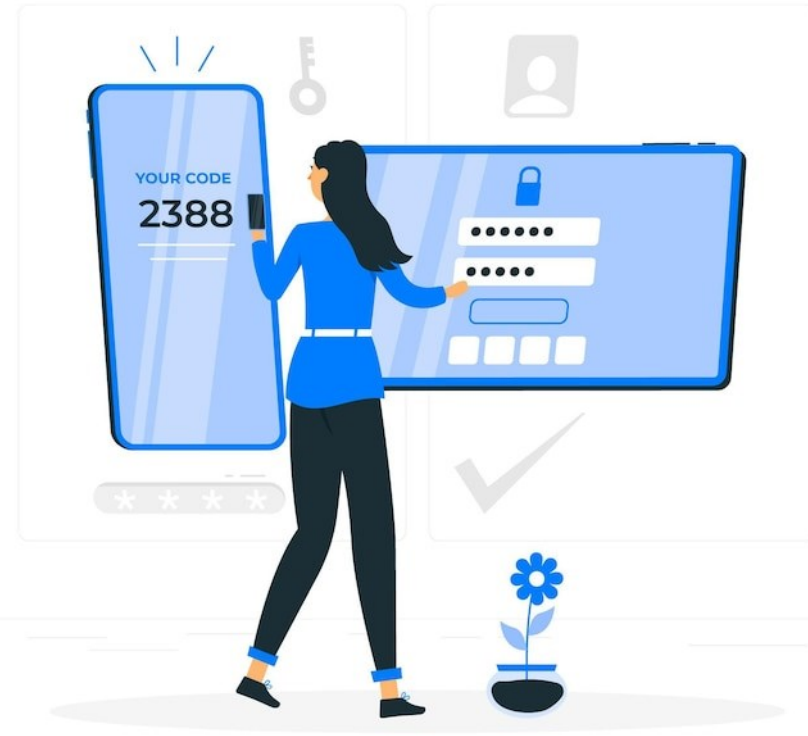
MCT IAM is an Identity and Access Management (IAM) solution that provides various features and benefits for organizations. Some of the key features and benefits of using MCT IAM include:

- **Authentication and Authorization:** MCT IAM provides a unified authentication and authorization framework for web applications, APIs, and microservices. It supports various authentication protocols such as OpenID Connect, OAuth 2.0, and SAML 2.0, and enables role-based access control (RBAC) and fine-grained authorization policies.
- **Single Sign-On (SSO):** MCT IAM supports SSO, which allows users to authenticate once and access multiple applications without being prompted to log in again. This improves user experience and security by reducing the number of passwords users need to remember.
- **Social Login:** MCT IAM also supports social login, which allows users to log in using their social media accounts such as Facebook, Twitter, and Google. This can simplify the login process for users and also provide more data to applications.



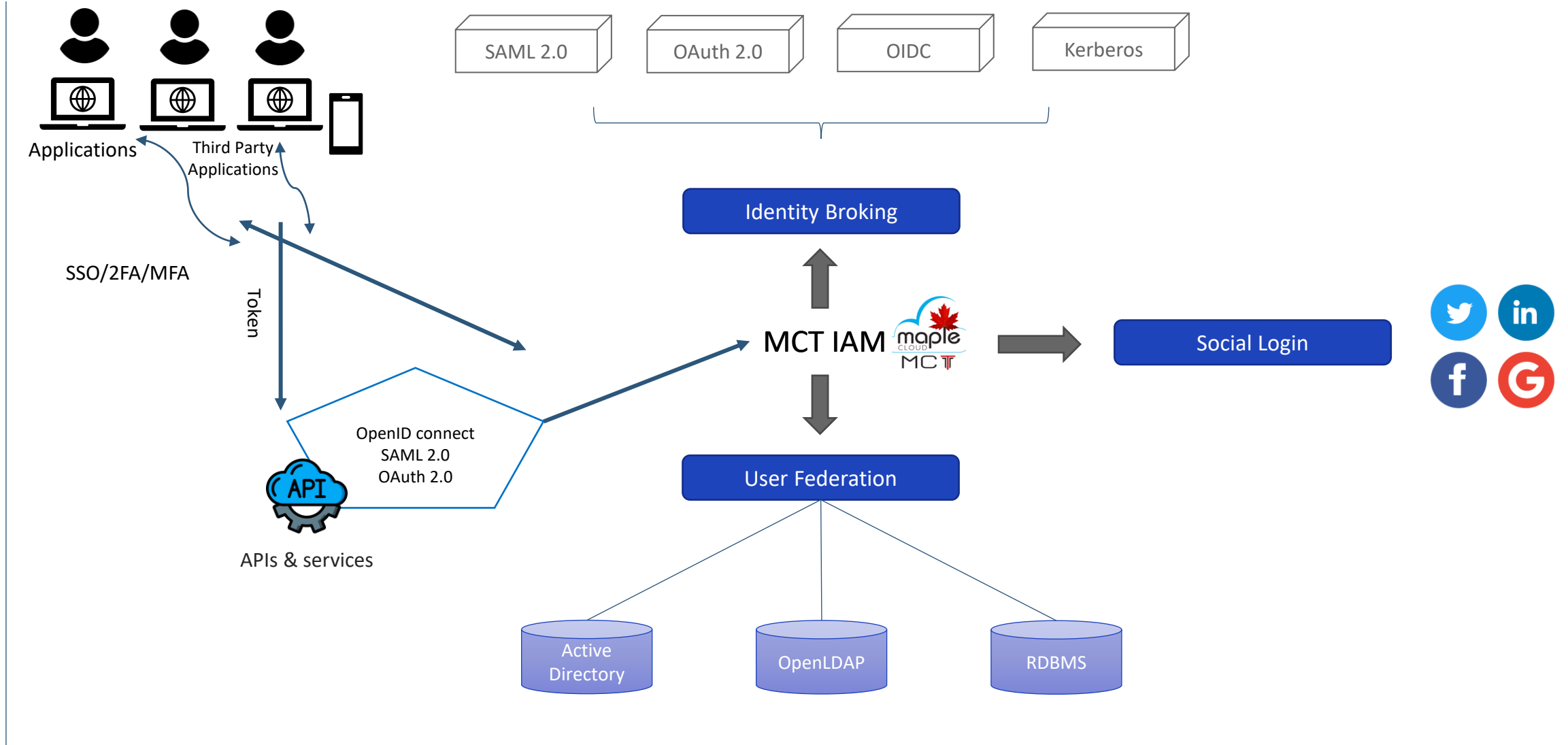
# FEATURES

- Two Factor Authentication (2FA), Multi-Factor Authentication (MFA): MCT IAM supports 2FA & MFA, which adds an extra layer of security to the authentication process by requiring users to provide additional verification such as SMS codes, email codes, or biometric factors.
- User Management: MCT IAM provides a web-based console for managing users, roles, and groups. It also supports LDAP and Active Directory integration, which allows organizations to synchronize user data from external sources.



In summary, MCT IAM provides a comprehensive IAM solution for web applications, APIs, and microservices. Its features and benefits make it a popular choice among developers and organizations looking for a robust, customizable, and cost-effective IAM solution.

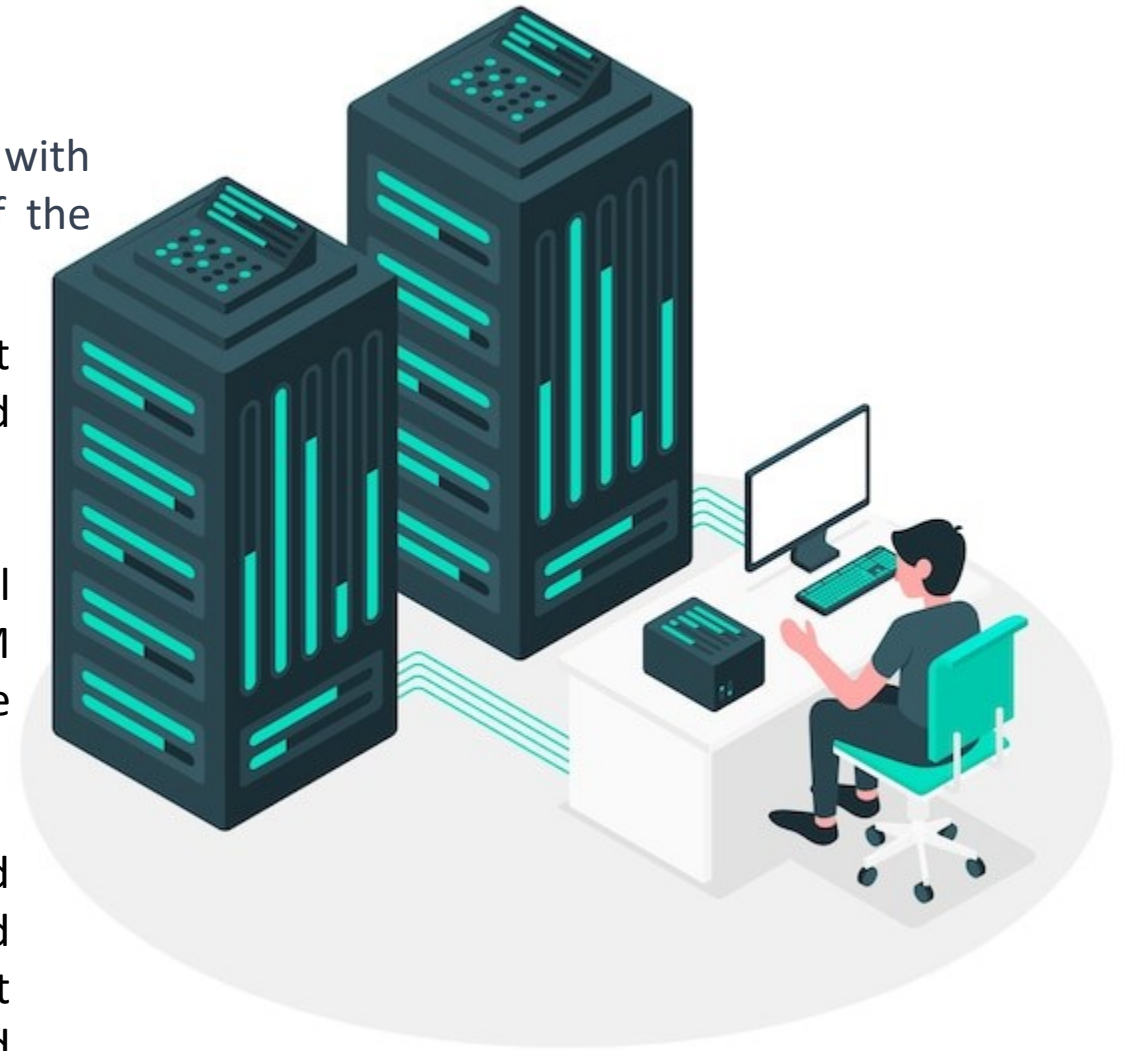
# MCT IAM ARCHITECTURE



# MCT IAM ARCHITECTURE-OVERVIEW

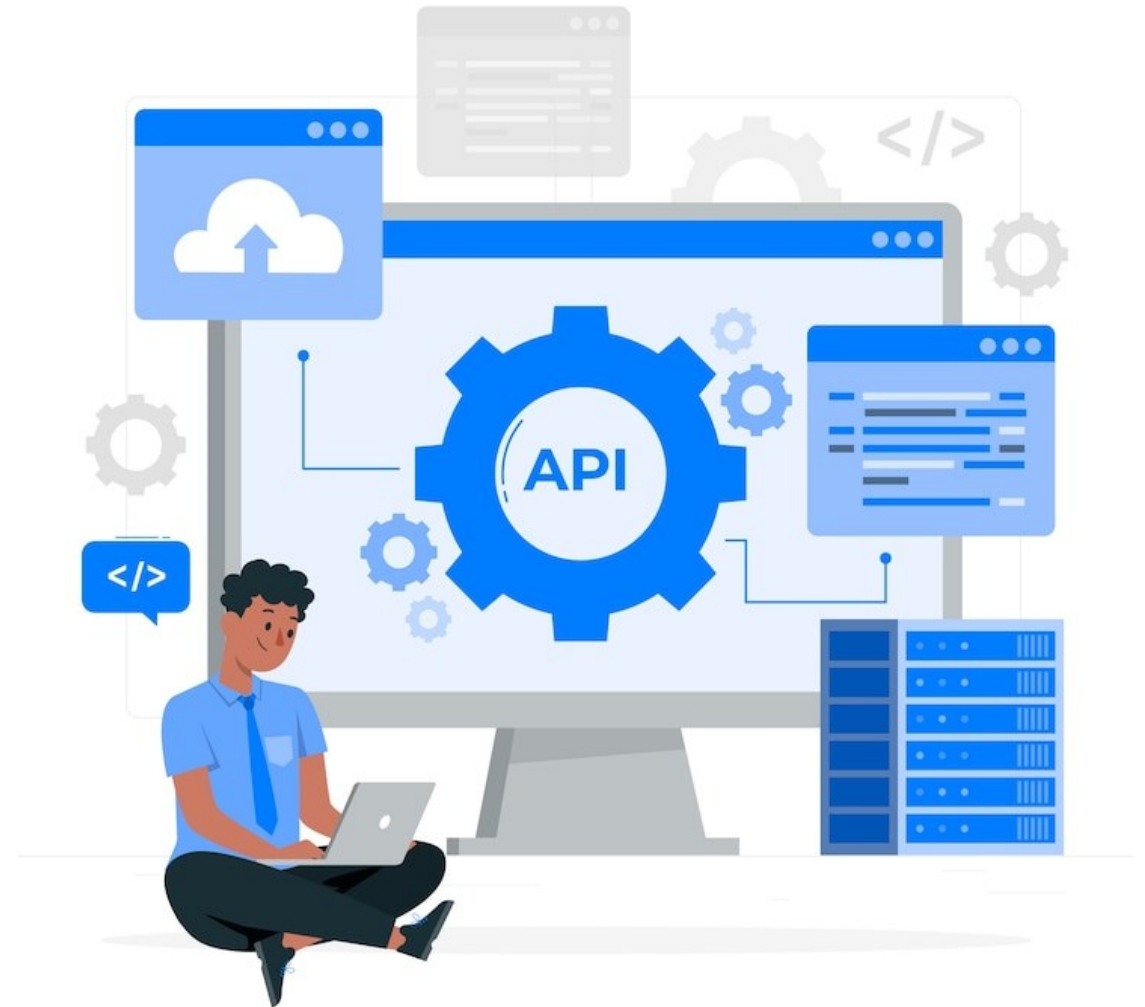
The MCT IAM architecture consists of several components, each with its own responsibilities and functions. Here is an overview of the MCT IAM architecture:

- **MCT IAM Server:** The MCT IAM Server is the core component of the IAM architecture. It provides authentication and authorization services for web applications and services
- **MCT IAM Database:** The MCT IAM Database is a relational database that stores the configuration and state of the IAM Server. The IAM server uses the database to store information such as users, roles, clients, and sessions.
- **MCT IAM Clients:** IAM Clients are the applications and services that use MCT IAM for authentication and authorization. MCT IAM supports a wide range of client types, including web applications, mobile applications, and service accounts.

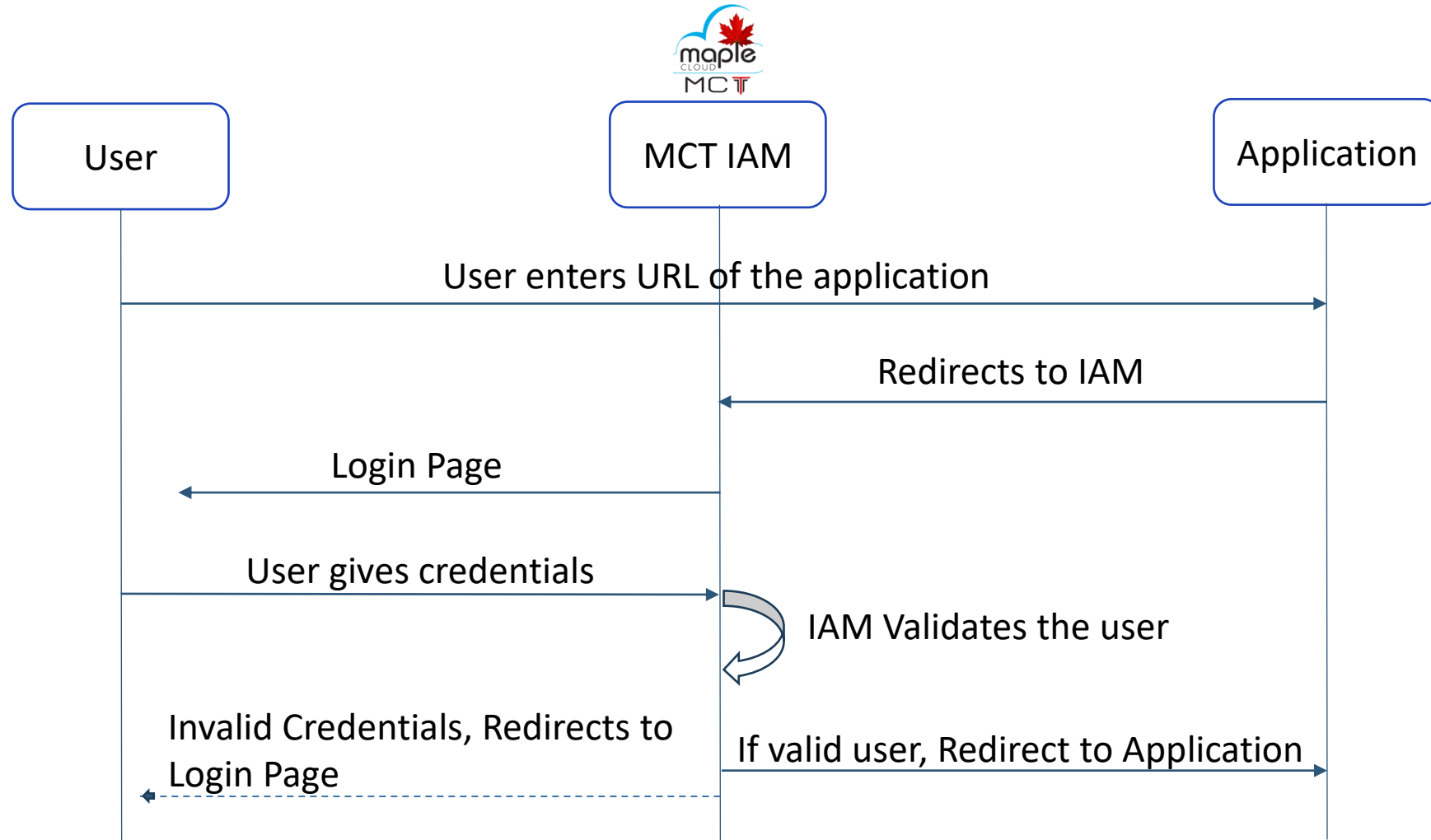


# MCT IAM ARCHITECTURE-OVERVIEW

- **MCT IAM Adapters:** MCT IAM Adapters are plugins that integrate IAM with different types of applications and services. MCT IAM provides adapters for popular frameworks and platforms such as Java, Node.js, and Spring Boot.
- **MCT IAM APIs:** MCT IAM APIs are RESTful endpoints that allow third party applications to integrate with MCT IAM programmatically on licensing terms. MCT IAM APIs are flexible enough to enable developers to create, update, and delete users, roles, clients, and other resources in MCT IAM.

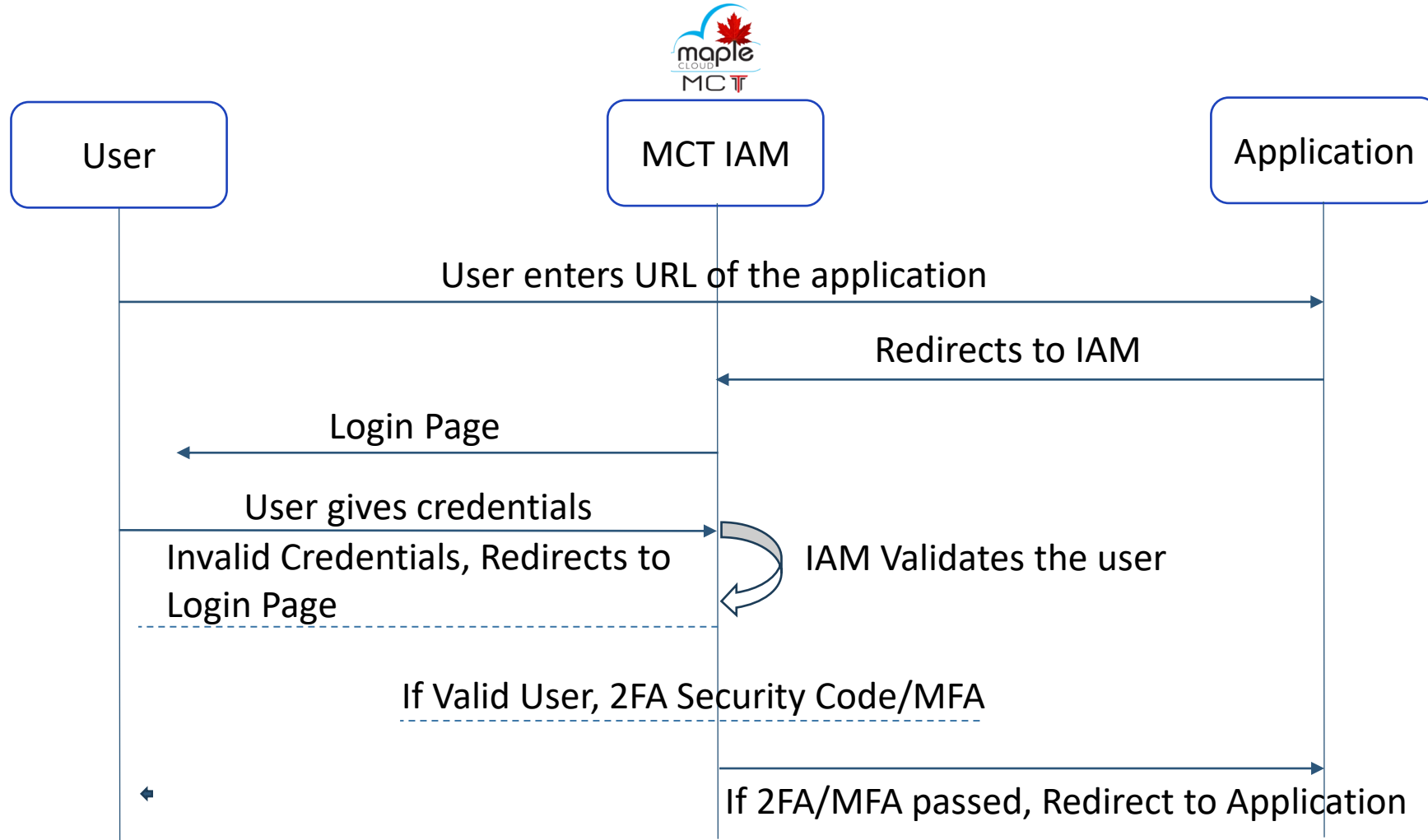


# MCT IAM SSO WORKFLOW



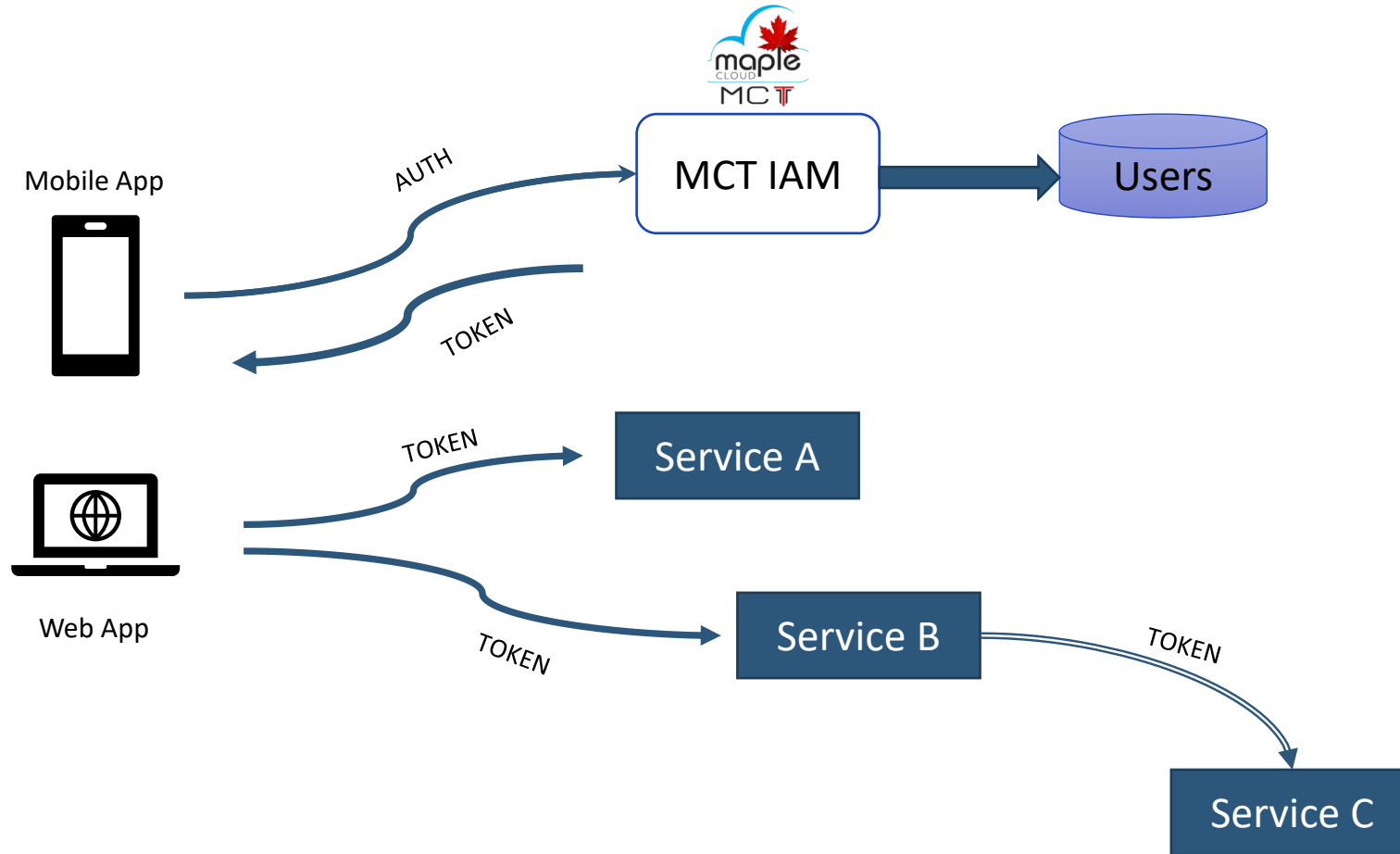


# MCT IAM SSO + 2FA/MFA WORKFLOW



# MCT IAM APPLICATION WORKFLOW

## MCT IAM App Flow





# THANKS!

DO YOU HAVE ANY  
QUESTIONS?

[fly@maplecloudtechnologies.com](mailto:fly@maplecloudtechnologies.com)

+918178803636

[www.maplecloudtechnologies.com](http://www.maplecloudtechnologies.com)